



# THE **GUARDIAN**

## **HYDRAULIC FLOOR SCALES**



**WASHDOWN**

- All Stainless Steel
- Water Resistant
- Corrosion Resistant
- Lifetime Load Cell Protection

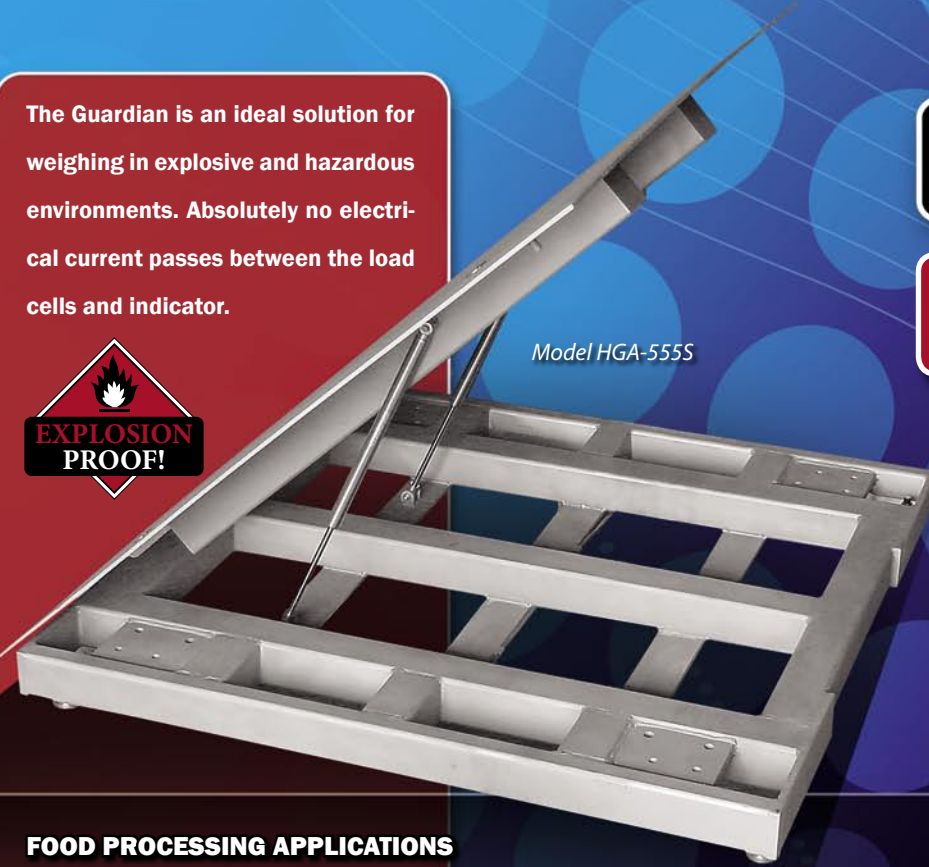
**Optimum  
Protection**



The Guardian is an ideal solution for weighing in explosive and hazardous environments. Absolutely no electrical current passes between the load cells and indicator.



Model HGA-555S



# THE GUARDIAN

**GAS-ASSISTED CYLINDERS**  
Model HGA

*Cardinal's Guardian HGA series feature gas-assisted cylinder lift-top decks. To open or close the scale deck, simply raise or lower it manually and the gas-assisted cylinders do all the heavy lifting for you, providing the necessary pressure for the lifting force. It functions just like the hatch on your car trunk.*

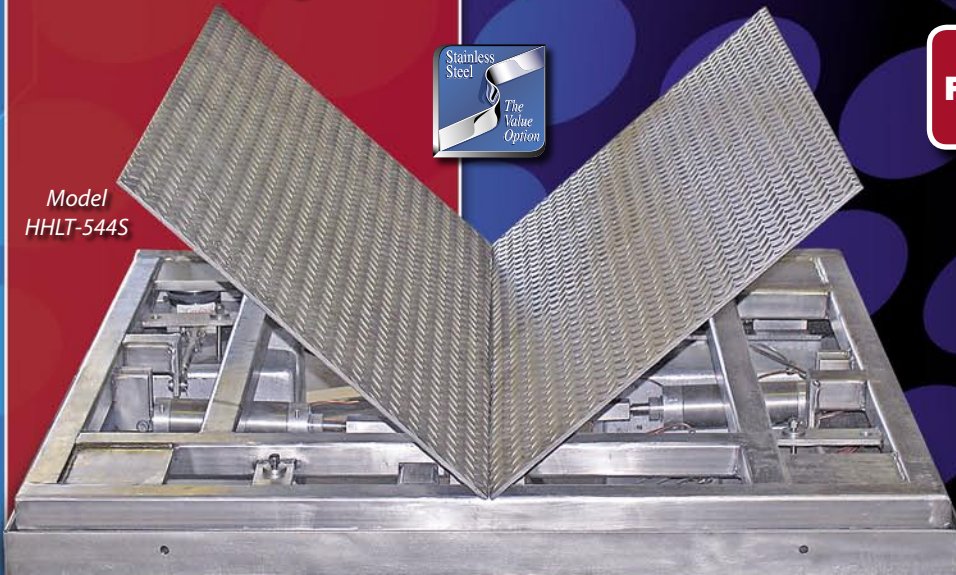
## FOOD PROCESSING APPLICATIONS

**CARDINAL'S GUARDIAN HYDRAULIC FLOOR SCALES** provide easy access to the area below the scale deck for cleaning with a high-pressure hose. This avoids hard-to-clean pockets that can breed bacteria and allow food or chemicals to build up over time. The scales are also available in two different types that allow the platform to easily lift up via gas-assisted cylinders or raise via valve activation with pneumatic cylinders for additional ease in **BELOW-DECK ACCESS**. These scales are specifically designed to meet the special **SANITATION REQUIREMENTS** in food processing and pharmaceutical plants. They provide quick access to components below the scale surface for cleaning and inspection.

**Non-Electronic Hydraulic Load Cells Featuring a Lifetime Warranty,  
3 Types of Removable Checkered Deck Plates for Easy Cleaning,  
Designed for USDA and HACCP Use.**



Model HHLT-544S



# THE GUARDIAN

**VALVE-CONTROLLED PNEUMATIC CYLINDERS**  
Model HHLT

*Cardinal's Guardian HHLT series feature valve-controlled lifting to automatically raise and lower the scale deck for easy access to components below the scale's surface for clean-up. Stainless steel pneumatic cylinders do all the heavy lifting for you! Ideal for the meat processing and chemical industries. Pit installation only.*

THE

# GUARDIAN

## HYDRAULIC FLOOR SCALES

Scales Come with Scale Totalizer Sized for the System and 20 ft. of Stainless Steel Tubing.



Model HH-544S



Optional Indicators

The Cardinal Guardian Hydraulic Floor Scale series is just what the name implies, optimum guarded protection against harsh environments. Most models are designed with **STAINLESS STEEL DECKS** and all feature **STAINLESS STEEL LOAD CELLS**. This premier floor scale guards against power surges, corrosion from chemicals, explosive environments, and high-pressure washdowns. Utilizing hydraulic load cells, there is absolutely **NO ELECTRICAL POWER IN THE SCALE ITSELF**, providing you with the best choice for weighing in water-laden environments. The Guardian is your shield against the dangers inherent in **EXTREME-DUTY ENVIRONMENTS** and is excellent for food grade processing applications. To insure your investment, Cardinal provides a lifetime warranty on the Guardian's hydraulic load cells.

### Cardinal Scale's All-Stainless Steel Hydraulic Load Cells

Constructed in 300 series stainless steel, Cardinal's hydraulic load cells are built to last a lifetime and require no electricity within the scale itself.



## Lifetime Load Cell Warranty

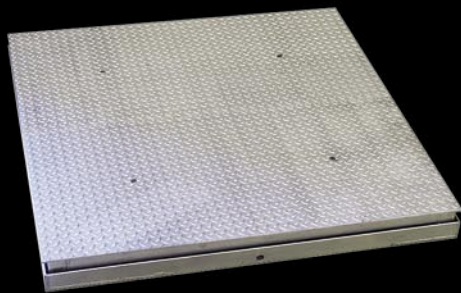
### NEVER REPLACE LOAD CELLS AGAIN!

All of this extreme-duty protection means one thing, big savings over the life of your floor scale.



# 3 Guardian Hydraulic Floor Scale Deck Types

THE  
**GUARDIAN**



## Guardian Hydraulic Floor Scales MANUAL LIFT DECKS

Model	Capacity	Platform Size	Deck Construction	Shipping Weight
HH-544S	5,000 lb x 1 lb / 2,500 kg x 0.5 kg	4' x 4' / 1.2 m x 1.2 m	Stainless Steel	564 lb / 256 kg
HH-555S	5,000 lb x 1 lb / 2,500 kg x 0.5 kg	5' x 5' / 1.5 m x 1.5 m	Stainless Steel	744 lb / 337 kg
HH-1044S	10,000 lb x 2 lb / 4,500 kg x 1 kg	4' x 4' / 1.2 m x 1.2 m	Stainless Steel	596 lb / 270 kg
HH-1055S	10,000 lb x 2 lb / 4,500 kg x 1 kg	5' x 5' / 1.5 m x 1.5 m	Stainless Steel	776 lb / 352 kg

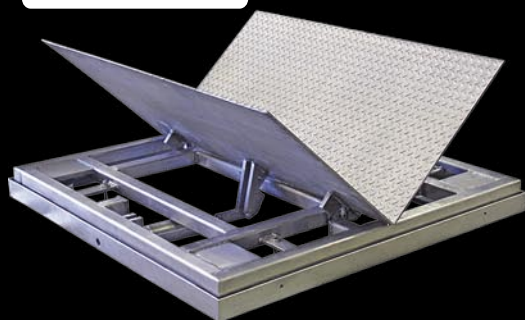
THE  
**GUARDIAN**



## Guardian Hydraulic Floor Scales GAS-ASSISTED CYLINDER LIFT-TOP DECKS

Model	Capacity	Platform Size	Deck Construction	Shipping Weight
HGA-555	5,000 lb x 1 lb / 2,500 kg x 0.5 kg	5' x 5' / 1.5 m x 1.5 m	Mild Steel	772 lb / 350 kg
HGA-1055	10,000 lb x 2 lb / 4,500 kg x 1 kg	5' x 5' / 1.5 m x 1.5 m	Mild Steel	804 lb / 365 kg
HGA-544S	5,000 lb x 1 lb / 2,500 kg x 0.5 kg	4' x 4' / 1.2 m x 1.2 m	Stainless Steel	623 lb / 283 kg
HGA-555S	5,000 lb x 1 lb / 2,500 kg x 0.5 kg	5' x 5' / 1.5 m x 1.5 m	Stainless Steel	772 lb / 350 kg
HGA-1055S	10,000 lb x 2 lb / 4,500 kg x 1 kg	5' x 5' / 1.5 m x 1.5 m	Stainless Steel	804 lb / 365 kg

THE  
**GUARDIAN**



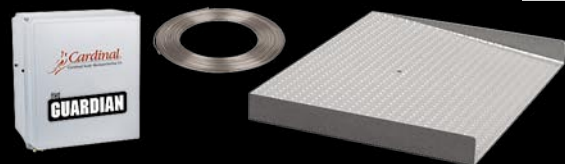
## Guardian Hydraulic Floor Scales VALVE-ACTIVATED PNEUMATIC CYLINDER DECK LIFTS

Model	Capacity	Platform Size	Deck Construction	Shipping Weight
HHLT-544S	5,000 lb x 1 lb / 2,500 kg x 0.5 kg	4' x 4' / 1.2 m x 1.2 m	Stainless Steel	621 lb / 282 kg
HHLT-555S	5,000 lb x 1 lb / 2,500 kg x 0.5 kg	5' x 5' / 1.5 m x 1.5 m	Stainless Steel	908 lb / 412 kg
HHLT-1044S	10,000 lb x 2 lb / 4,500 kg x 1 kg	4' x 4' / 1.2 m x 1.2 m	Stainless Steel	653 lb / 296 kg
HHLT-1055S	10,000 lb x 2 lb / 4,500 kg x 1 kg	5' x 5' / 1.5 m x 1.5 m	Stainless Steel	940 lb / 426 kg

Pneumatic controls not included with HHLT models.

*Scales Come with Scale Totalizer Sized for the System and 20 ft. of Stainless Steel Tubing.*

*Optional Ramps Available for Loading Convenience.*



Cardinal Scale reserves the right to improve, enhance or modify features and specifications without prior notice. All registered trademarks are the property of their respective owners.

**SOLD BY:**



**Cardinal**  
Cardinal Scale Manufacturing Co.  
203 E. Daugberty, Webb City, MO 64870 USA  
Ph: 417-673-4631 or 800-441-4237 • Fax: 417-673-5001  
[www.CardinalScale.com](http://www.CardinalScale.com)